



THE UNIVERSITY OF
MELBOURNE

Welcome to Melbourne: International Student Webinar

Graduate students

Thursday 16 July 2020





欢迎
स्वागतम्
සාදරයෙන් පිළිගනිමි

Selamat datang

Welcome



THE UNIVERSITY OF
MELBOURNE

Wominjeka

Hoan nghênh
خوش آمدید
Bienvenidos
환영합니다

We acknowledge and pay respect to the Wurundjeri people, the Traditional Owners of this land.





Session overview

- Virtual campus
- Understand your course and enrolment
- Enriching your university experience
- How we can help you
- Next steps

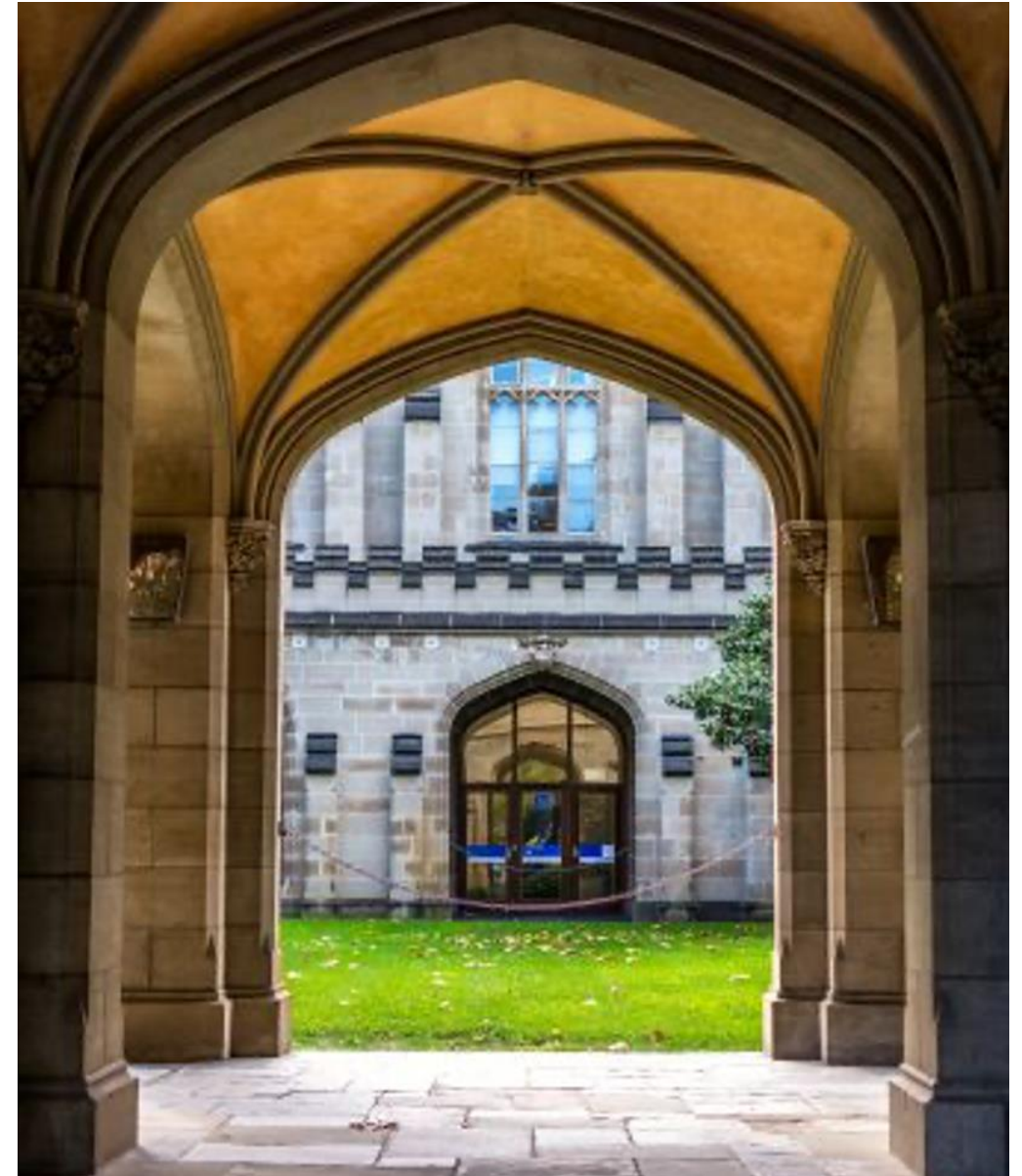




The University of Melbourne

42% international students
from **130+** countries

- Founded in 1853
- Ranked #1 in Australia
- World class teaching, learning facilities and opportunities
- 65,000+ current students
- 51% undergraduate 49% graduate
- 8,000+ staff
- 385,000+ living alumni
- 200+ student clubs and societies
- 7 Nobel prize winners





Virtual campus

Our community is more connected than ever

> unimelb.edu.au/community

studentit.unimelb.edu.au/studying-remotely





International student checklist

🏠 Students > New students > International Student Checklist

International Student Checklist

Starting online

Preparing to depart

After you arrive

Set up for studying remotely

Connect to networks, set up your IT, download free software and apps.

Complete your English assessment

Take the Diagnostic English Language Assessment.

Join the community

Become part of our thriving campus, and come together by sharing stories and experiences.

Get support

Stop 1 provides specialist assistance, advice and information for international students.

Develop your academic skills

Realise your potential with online modules, workshops and appointments.

Get set up to use the Library

Find essential information to connect with the Library and its online resources

students.unimelb.edu.au/new-students/international-student-checklist



Complete your enrolment

1. Accept your offer

Complete the Student Acceptance and Payment Agreement.

2. Receive your Confirmation of Enrolment (CoE)

You will need your CoE to apply for your student visa.

3. Submit your visa application

A student visa is necessary to study in Australia as an international student.

4. Set up your official student account

Get email, portal and library access.

5. Log into your student portal

Get familiar with my.unimelb, your online home for all things university-related.

6. Complete your administrative enrolment

Complete your course enrolment and provide your personal details.

7. Plan your course

Choose which subjects to take using the Handbook and course maps.

8. Enrol in your subjects

Use the Study Plan to enrol in the subjects you've chosen.

9. Check your fees and due dates

Understand your fees, due dates, payment options and the importance of paying on time.

10. Order your student card

Upload your photo online and get your card before classes start.

11. Start creating your timetable

Once you've enrolled in your subjects, you will be ready to start building your class timetable.

12. Plan your Melbourne Orientation itinerary

Use the event planner to lock in activities you don't want to miss.

Stop 1 provides you with services to help you succeed

ADMINISTRATION AND ENROLMENT SERVICES

- Course planning
- Class timetable
- Fees
- Student cards
- Subject enrolment

HEALTH AND WELLBEING

- Counselling and Psychological Support
- Student Equity and Disability Support
- Faith and spirituality
- Financial Service
- Health Service
- Housing
- Safety on campus

SKILLS AND OPPORTUNITIES

- Academic skills
- Careers and employability
- Future study
- Internships and mentoring
- Overseas Study
- Work on campus



Call us

Outside Australia: [+61 3 9035 5511](tel:+61390355511)



Chat online

Chat one-on-one with one of our Stop 1 advisers.



Submit an enquiry

Submit an enquiry or update an existing enquiry.



Book an appointment

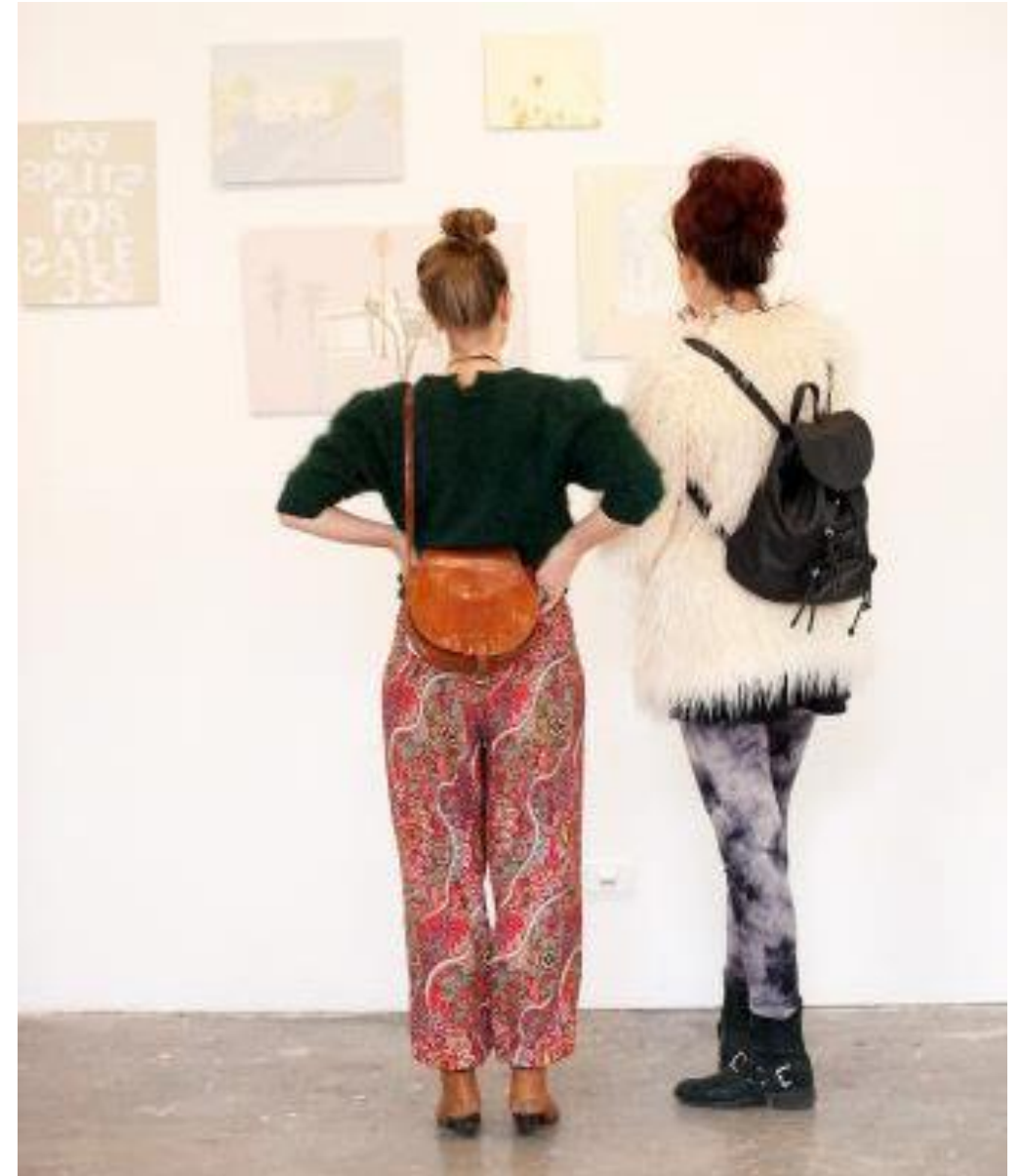
One-on-one appointments are available for many of our student services.

> students.unimelb.edu.au/student-support/advice-and-help/stop-1



Your course and enrolment


- Understand your course components including capstones
- Course planning resources
- Work integrated learning and co-curricular experiences
- Review your plan at the end of each semester
- Check that you are meeting your **course requirements**





The Handbook

> handbook.unimelb.edu.au

Handbook > Search

SearchMenu

The University of Melbourne's official source of course and subject information

Search for

Courses, subjects or keywords

Search

Show only

4,417

All result types

443

Courses

3,842

Subjects

132

Breadth Track

443 results found with 2 filters applied

Reset search

Page 1 of 23

Sort by Relevance

Master of Ecosystem Management and Conservation MC-ECOSMC

Graduate Coursework

Parkville, On Campus

24 months full-time or 48 months part-time

200 credit points

Master of Entrepreneurship MC-ENTR

Graduate Coursework

Parkville, On Campus

12 months full-time

150 credit points

Master of Actuarial Science (Extended) MC-ACTSCSX

Graduate Coursework

Parkville, On Campus

24 months full-time or 48 months part-time

200 credit points

Master of Applied Positive Psychology MC-APP

Graduate Coursework

Parkville, On Campus

12 months full-time or 24 months part-time

100 credit points

Version

Current Handbook — 2020

Course Levels

1 course level selected

Campuses

All campuses/attendance modes

Faculties

All faculties

View advanced fields

Update results

Reset search

Admissions

Visit Study for information on admissions.

Enquiries

Current students should refer to the relevant contact section of each Handbook entry for specific course/subject enquiries or [contact Stop 1](#).

Got Feedback?

Have you got any feedback on how we can make the Handbook better? Please [contact](#)

> ask.unimelb.edu.au

Current Student FAQsAsk UsStaff information

Search...

Search

Go back a step

University Handbook Subject Page

What information is available from each subject page in the University Handbook?

Each University subject has its own subject page within the [University Handbook](#). The following information may be available from each subject page:

Subject Coordinator Contact Details

More

Dates & Times

More

Link to Timetable Information

More

Quotas and Special Selection Processes

More

Prerequisites

More

Corequisites

More

Non Allowed Subjects

More

Recommended Background Knowledge

More

Assessment

More

Study Mode

More

About this answer

Last updated: 31/01/2019 03.11 PM

Answer ID: 5678

Was this answer helpful?

Yes

No

Hot Topics

Most popular FAQs

- [Enrolment Declaration](#)
- [Result Release](#)
- [Accessing student email](#)
- [Evidence of Enrolment](#)
- [WAM Calculation](#)
- [Weighted Average Mark \(WAM\)](#)
- [Final subject assessment](#)
- [Changing your name and details](#)
- [Appealing a Result](#)
- [Fees Due Dates](#)

Enrolling via the Study Plan

MASTER OF PUBLIC POLICY AND MANAGEMENT

YEAR 1	FHY	PPMN90042 Political Problems and Policy Responses	Core	Core
	SHY	PPMN90037 Governance	Elective	Elective
YEAR 2	FHY	PPMN90007 Public Policy Analysis	Elective	Elective
	SHY	PPMN90006 Executive Leadership and Management	Elective	Elective

344AB - Master of Public Policy and Management

Admitted 2020, Mid Year Intake, Parkville, On Campus Credit Points: 200

[More Details](#)

200pt Program

Structure [Change](#)

[More Details](#) [Group Details](#)

PPMN90006 - Executive Leadership and Management

Core Component
Enrolled Credit Points: 25
Icon 2020, August, Parkville, On Campus You are unable to change the availability from the default selected for you. [Enrol](#)

[More Details](#) [Requisite Information](#)

PPMN90007 - Public Policy Analysis

Core Component
Enrolled Credit Points: 25
Icon 2020, July, Parkville, On Campus You are unable to change the availability from the default selected for you. [Enrol](#)

[More Details](#) [Requisite Information](#)

PPMN90037 - Governance

Core Component
Enrolled Credit Points: 25
Icon Period: 2020 July
2020, July, Parkville, On Campus You are unable to change the availability from the default selected for you. [Enrol](#)

[More Details](#)

PPMN90042 - Political Problems and Policy Responses

Core Component
Enrolled Credit Points: 25
Icon Period: 2020 Semester 2 (Early-Start)
2020, Semester 2 (Early-Start), Parkville, On Campus You are unable to change the availability from the default selected for you. [Enrol](#)

[More Details](#)

Option subjects

Option 25 Credit Points remaining for selection
Component
Icon [Choose](#)

[More Details](#)

Coursework or Minor Thesis

Option 75 Credit Points remaining for selection
Component
Icon [Choose](#)

[More Details](#)

> my.unimelb.edu.au

> students.unimelb.edu.au/your-course/manage-your-course/subject-enrolment/enrolling-in-subjects

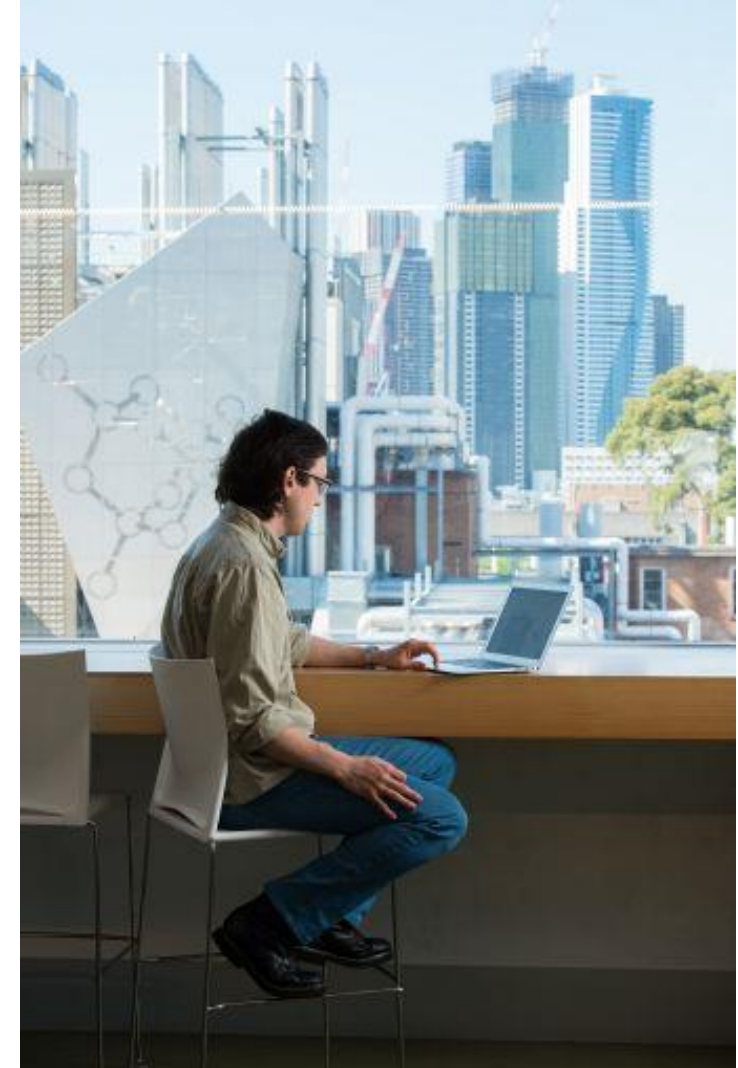


Managing your enrolment online

The Enrolment Variation form enables you to manage your subject or course enrolment:

- Request a prerequisite waiver
- Add approved subjects to my Study Plan
- Change a major or minor
- Change a course stream
- Overload
- Accept non-credit exemptions

> students.unimelb.edu.au/your-course/manage-your-course/managing-enrolment-online





Enrolment Timeline

University dates

Semester dates	University holidays
Monday 27 July to Friday 31 July	Orientation
August	
Monday 3 August to Sunday 1 November	Semester 2 - 12 teaching weeks
Monday 17 August to Friday 21 August	Employability Week
September	
Friday 25 September	Friday before AFL Grand Final holiday - (TBC subject to AFL schedule)
October	
Monday 5 October to Sunday 11 October	Non-teaching period & UA Common Vacation Week
November	
Monday 2 November to Friday 6 November	SWOT Vac
Monday 9 November to Friday 27 November	Examinations

Key dates for Semester 2, 2020 (refer to Handbook)

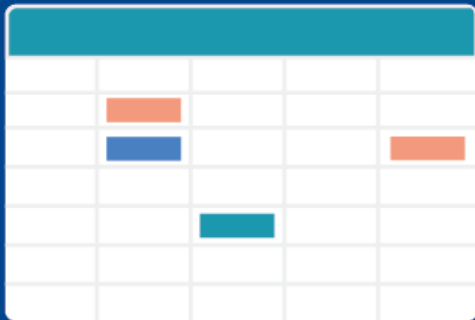
- Orientation: 27 – 31 July
- Semester 2 teaching dates: 3 August – 1 November
- Mid-semester break: 5 – 11 October
- Examination period: 9 – 27 November

> students.unimelb.edu.au/your-course/manage-your-course/key-dates

MyTimetable

Enter your preferred times for the classes you are enrolled in, up until 20 July

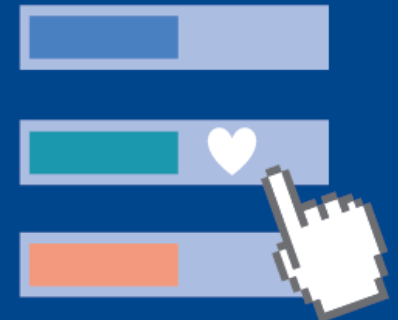
On 24 July you can review your timetable and adjust based on the final schedule



Plan



Preference



Review and adjust



Learning Management System (LMS)

Account

Dashboard

Courses

Groups

Calendar

Inbox

Help

Dashboard

Biology 101
BIO 101
Fall 2019

Classic Literature
ENG 205
Fall 2019

History 101
HIST 101
Fall 2019

Zoology 101
ZOO 101
Fall 2019

To Do

The Bill of Rights Quiz

History 101
10 points |
Sep 21 at 11:59pm |

Logical Fallacy Project

Biology 101
100 points |
Oct 15 at 11:59pm |

Reading Quiz Ch 5-8 All Qu...

Classic Literature
5 points |
Oct 30 at 11:59pm |

Read the rest of All Quiet o...

Classic Literature
20 points |
Nov 1 at 11:59pm |

Revolution Topic Discussion

History 101
Nov 1 at 11:59pm |

Animal Farm

Classic Literature
Nov 4 at 11:59pm |

Declaration of Independen...

History 101
10 points |
Nov 5 at 11:59pm |

[Show All](#)

> lms.unimelb.edu.au



Enrich your degree

- Regularly check my.unimelb.edu.au and the my.uniLife app
- Speak to peers and academic staff
- Read faculty newsletters and social media platforms
- Attend student services workshops, information sessions and events virtually
- Participate in mentoring programs – Ask Alumni
- Visit students.unimelb.edu.au and ask.unimelb.edu.au
- Ask Stop 1
- Engage with clubs and societies





Get career ready

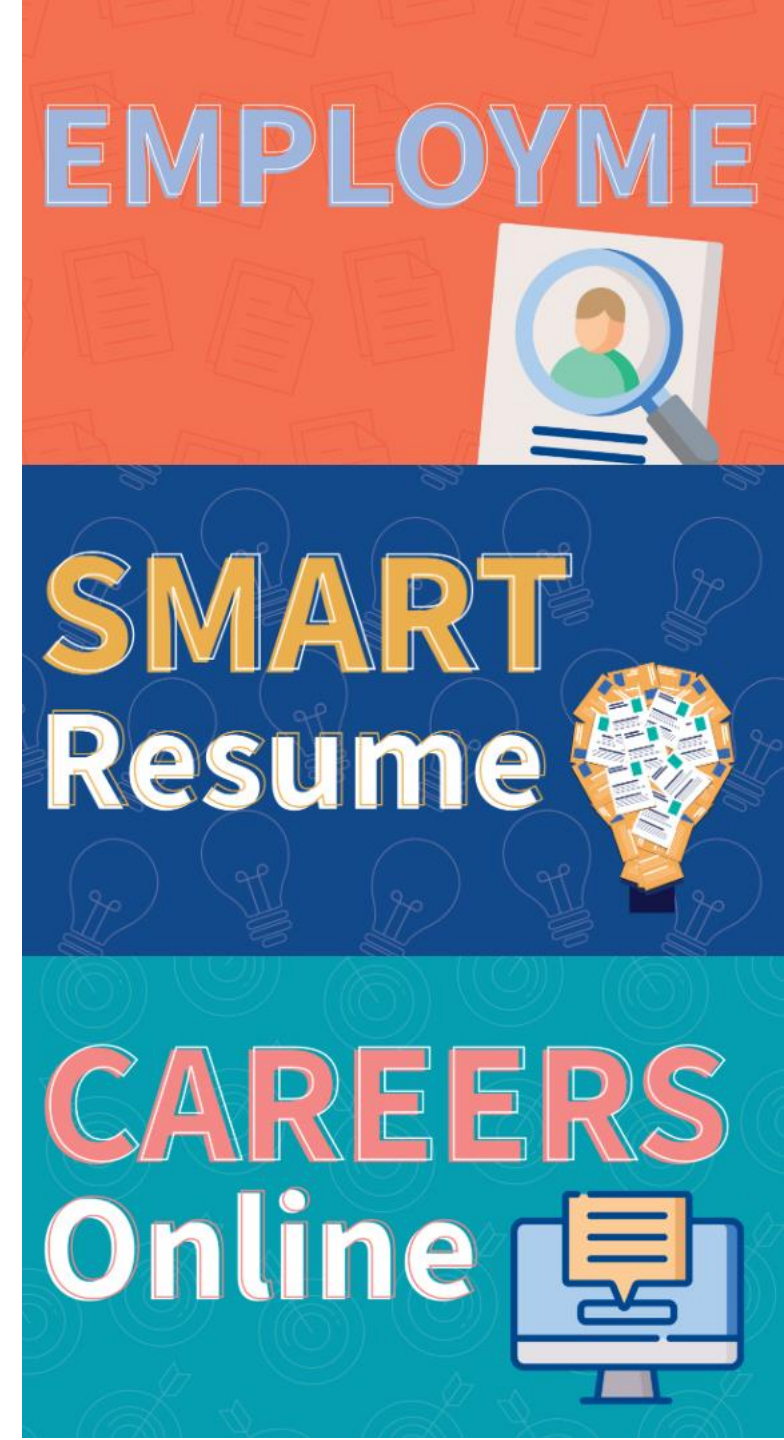
Explore our online platforms:

- EmployMe
- Smart Resume
- Careers Online
- Career advice

Get involved:

- Internships
- Placements

students.unimelb.edu.au/careers





27 - 31 July

Melbourne **ORIENTATION**

Get ready to start Uni!

Create your Orientation itinerary online:
> students.unimelb.edu.au/new-students/melbourne-orientation





Get involved

University of Melbourne Student Union (UMSU)

UMSU are the peak representative body students at UniMelb. They organise events, workshops, festivals and welfare programs to support and enhance your university experience. You can also join UMSU International - a subsidiary covering international students.

Winterfest Online: 27 July – 31 July 2020

umsu.unimelb.edu.au

Graduate Students Association (GSA)

The GSA are the heart of graduate student life. GSA provides all 36,000+ enrolled graduate students at the University of Melbourne with representation, events, training and support.

gsa.unimelb.edu.au





Pursuit

**Cutting-edge research
and insightful
commentary by world-
leading experts**

—
pursuit.unimelb.edu.au



MDHS Buddy Program

Are you a new commencing international postgraduate student in the Faculty of Medicine, Dentistry and Health Sciences?

This program is just for you!

Connect with senior students in the faculty

Make new friends in a new country

Explore and discover student life together

Be part of Semester 2's program now!
Register at go.unimelb.edu.au/y9tr



What's next?

➤ Keep your eye out for these *important emails* from us during your onboarding journey.

you are here



**OFFER
LETTER**



**STUDENT
CHECKLIST**

Complete, discover.



**MELBOURNE
ORIENTATION**

*Online activities to
get you started.*



**FIRST DAY
OF CLASS**

Welcome to uni!

keep an eye on your inbox



Thank you!

Meet our students

